

Stoke Newington Church Street - Healthy Streets Project

Initial interim traffic data

6 October 2021

Background and scope of report

On 20th September a 7am-7pm bus gate was installed on Stoke Newington Church Street (SNCS) to reduce private motor traffic on this traffic-dominated local high street.

The scheme is being monitored through a combination of data sources, which become available at different times. The full monitoring strategy is available in the delegated powers decision report found here: <https://rebuildingagreenerhackney.commonplace.is/proposals/stoke-newington>

The data in this report is an initial snapshot of the data from some of the traffic counters in the Stoke Newington area during September 2021. This is not a comprehensive traffic analysis of all information being used to monitor the scheme, but is the first data that is available.

Continuous traffic counters were installed and have been active since 1 Sept 2021 on Stoke Newington Church Street, Lordship Park, Lordship Road and Green Lanes to measure the volume of cycles, pedestrians and several classes of motor vehicles based on size: cars, Light Goods Vehicles (LGV), Buses, Rigid large vehicles (OGV1) and largest vehicles such as heavy goods vehicles (OGV2).

Traffic on Stoke Newington Church Street - September 2020

The traffic counter on Stoke Newington Church Street is located east of Kersley Street, therefore it does not measure the exact number of vehicles that travel through the bus gate further west as there are three 'exit routes' between the counter and the bus gate restriction. Compliance with the bus gate restriction is monitored by the enforcement cameras at the location and will be released in the future.

Figure 1, **Figure 2** and **Figure 3** show data from the Stoke Newington Church Street traffic counter east of Kersley Road and is an initial snapshot of traffic patterns in the first 10 days of the scheme operating.

Figure 1: Stoke Newington Church St, east of Kersley, 24 hour totals, 1 Sept to 30 Sept - All motor vehicles (including buses), pedestrians and cyclists

Stoke Newington Church St Counts - September 2021

Motor vehicles, cycles and pedestrians - 24hr

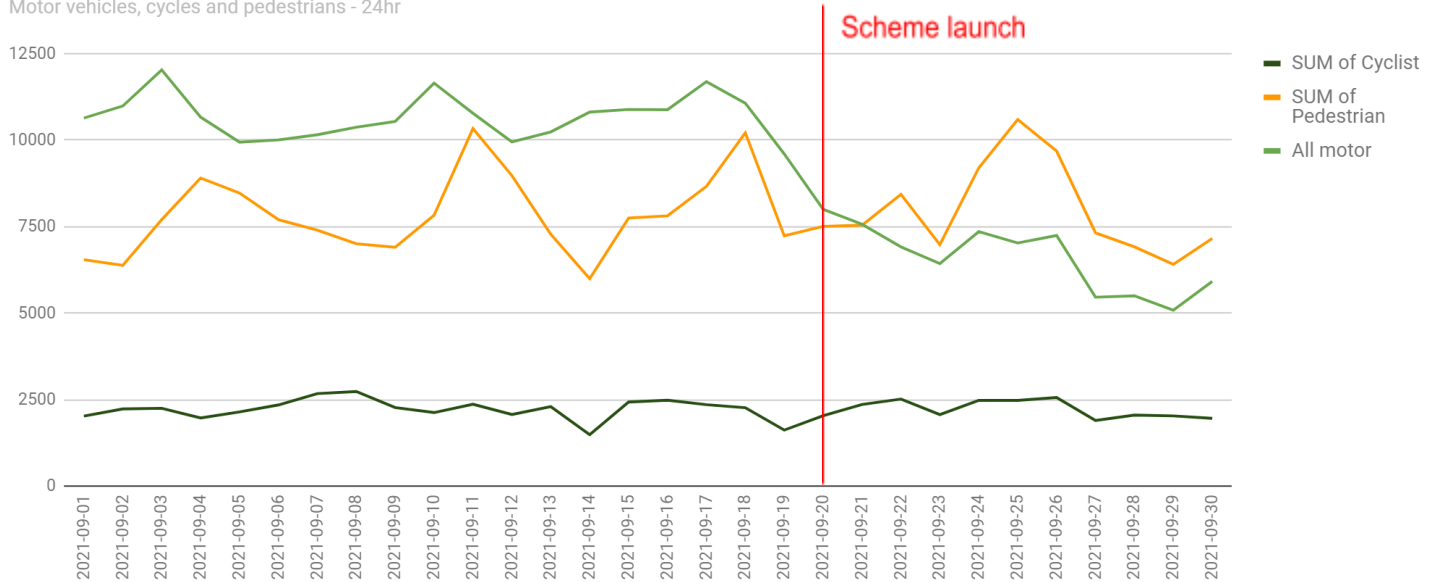


Figure 2: Stoke Newington Church St, east of Kersley, 7am to 7pm hour totals, 1 Sept to 30 Sept - all traffic categories

Stoke Newington Church St Counts - September 2021

Motor vehicles, cycles and pedestrians - 7am to 7pm, 12 hr totals

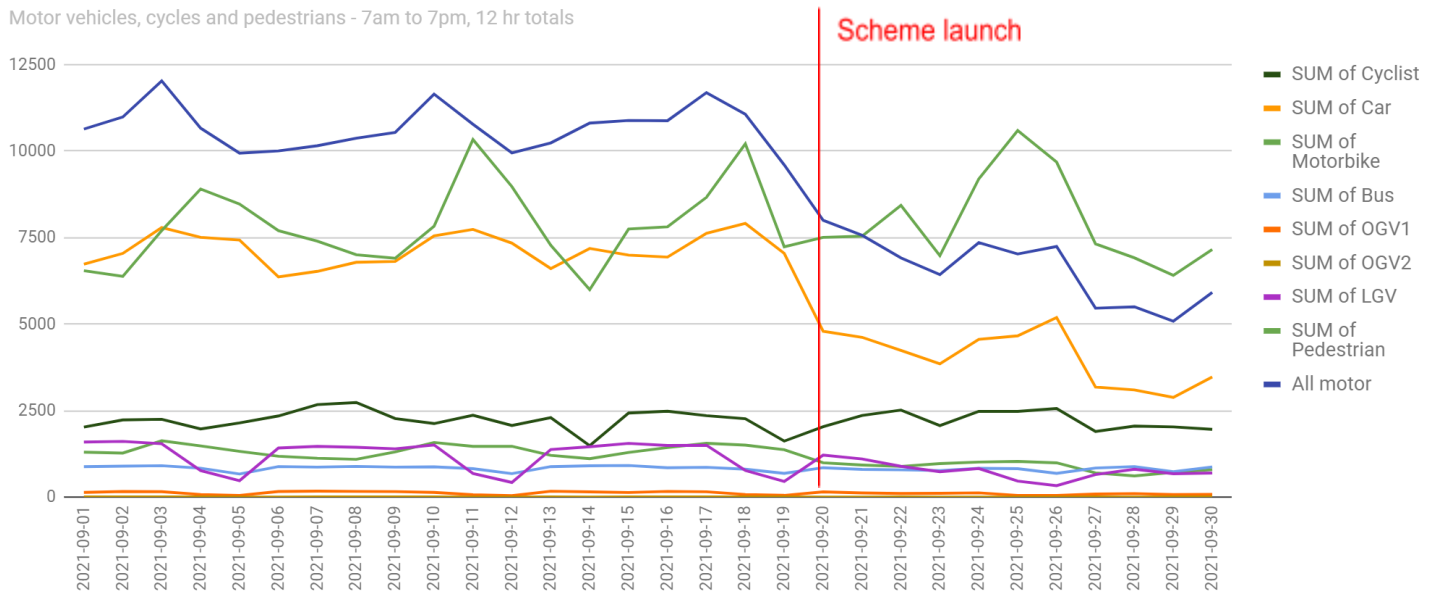
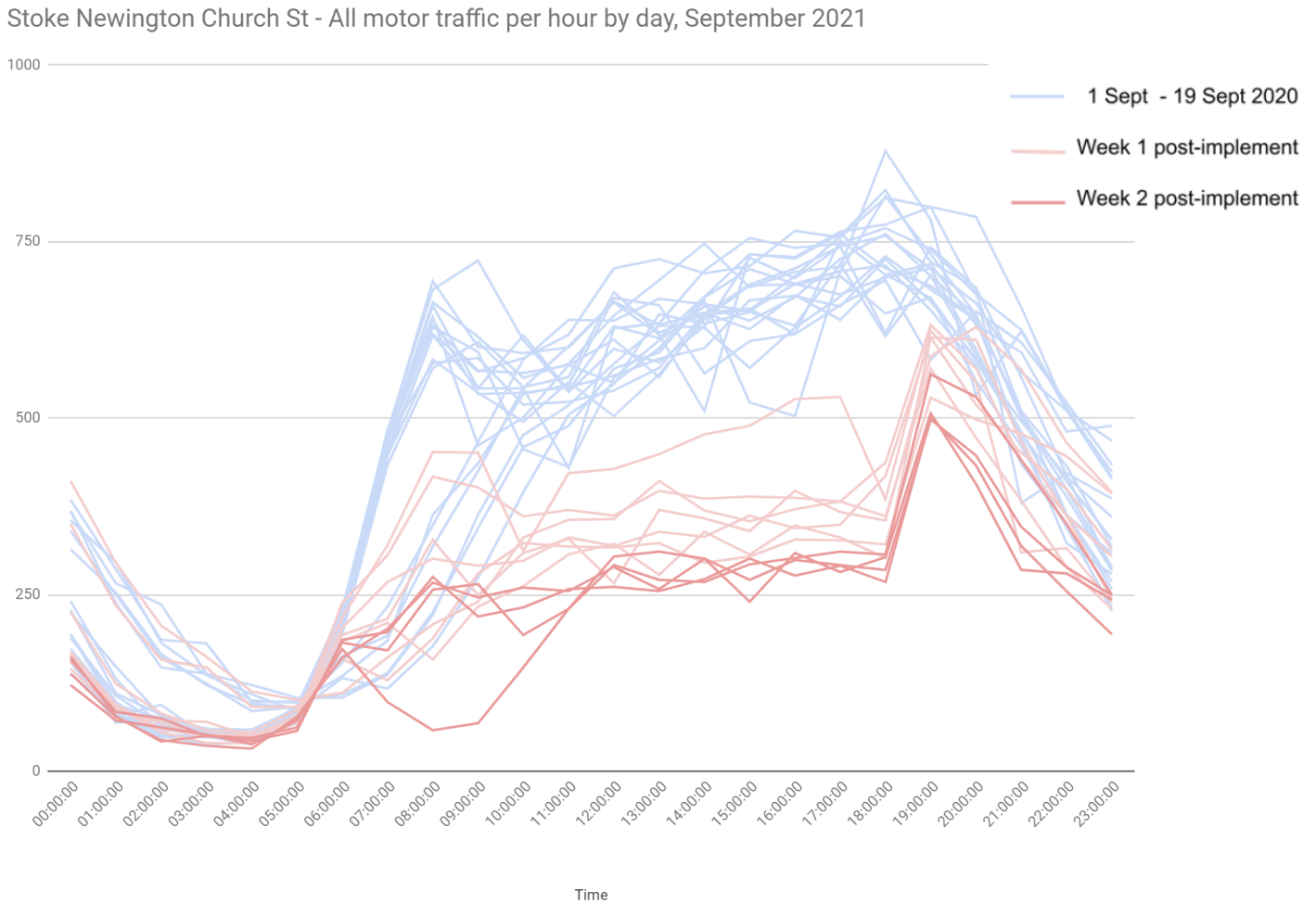


Figure 3: Stoke Newington Church Street patterns of motor traffic by hour of day before and after implementation of bus gate



The 24 hour daily totals from Church Street show that all motor vehicle traffic has declined from the start of the month to the end of the month.

Table 1 and **Table 2** show time periods immediately before and after the scheme was installed, daily averages were taken for a representative period before the scheme was installed - Mon 6 Sept through Fri 17 Sept, which captures one weekend and ten weekdays - and compared against the period following the scheme implementation - Tues 21 Sept through Thurs 30 Sept, which captures one weekend and 8 weekdays.

Table 1: Stoke Newington Church Street: 24 hour Average Flow of Motor Vehicles*, Pedestrians and Cycles

| | All motor | Pedestrians | Cycles |
|--------------------|-----------|-------------|--------|
| Before (6-17 Sept) | 10664 | 7804 | 2302 |
| After (21-30 Sept) | 6450 | 8024 | 2239 |
| change | -4215 | 219 | -63 |
| % change | -39.5% | 2.8% | -2.7% |

*including buses and 'other'

Table 2 compares motor vehicle traffic and pedestrians and cycle traffic on Church Street during the hours of operation of the bus gate in the ten days before the scheme was introduced to ten days afterwards. It shows that the average daily flow of motor traffic has reduced by 51.7% from 7,279 to 3514. Pedestrian flows increased slightly by 5.5% while cycling flows were almost unchanged.

Table 2: Stoke Newington Church Street: 7am to 7pm hour Average Flow of Motor Vehicles*, Pedestrians and Cycles

| Stoke Newington Church Street 7am - 7pm Average Flow of Motor Vehicles*, Pedestrians and Cycles | | | |
|--|-----------|-------------|--------|
| | All motor | Pedestrians | Cycles |
| Before (6-17 Sept) | 7279 | 6202 | 1730 |
| After (21-30 Sept) | 3514 | 6542 | 1717 |
| change | -3765 | 339 | -13 |
| % change | -51.7% | 5.5% | -0.8% |

*including buses and 'other'

Table 2a: Stoke Newington Church Street: 7am to 7pm hour Average Flow of Motor Vehicles, Pedestrians and Cycles - Expanded Motor Vehicle categories

| Stoke Newington Church Street 7am - 7pm Average Flow of Motor Vehicles expanded categories, Pedestrians and Cycles | | | | | | | | |
|---|-------------|--------|--------|-----------|-------|--------|--------|--------|
| | Pedestrians | Cycles | Car | Motorbike | Bus | OGV1 | OGV2 | LGV |
| Before (6-17 Sept) | 6227 | 1737 | 4674 | 798 | 546 | 117 | 3 | 1140 |
| After (21-30 Sept) | 6542 | 1717 | 1936 | 456 | 493 | 70 | 2 | 577 |
| change | 314 | -20 | -2738 | -342 | -53 | -48 | -1 | -564 |
| % change | 5.0% | -1.1% | -58.6% | -42.8% | -9.8% | -40.7% | -41.9% | -49.4% |

East / West traffic on Stoke Newington Church Street and Lordship Park

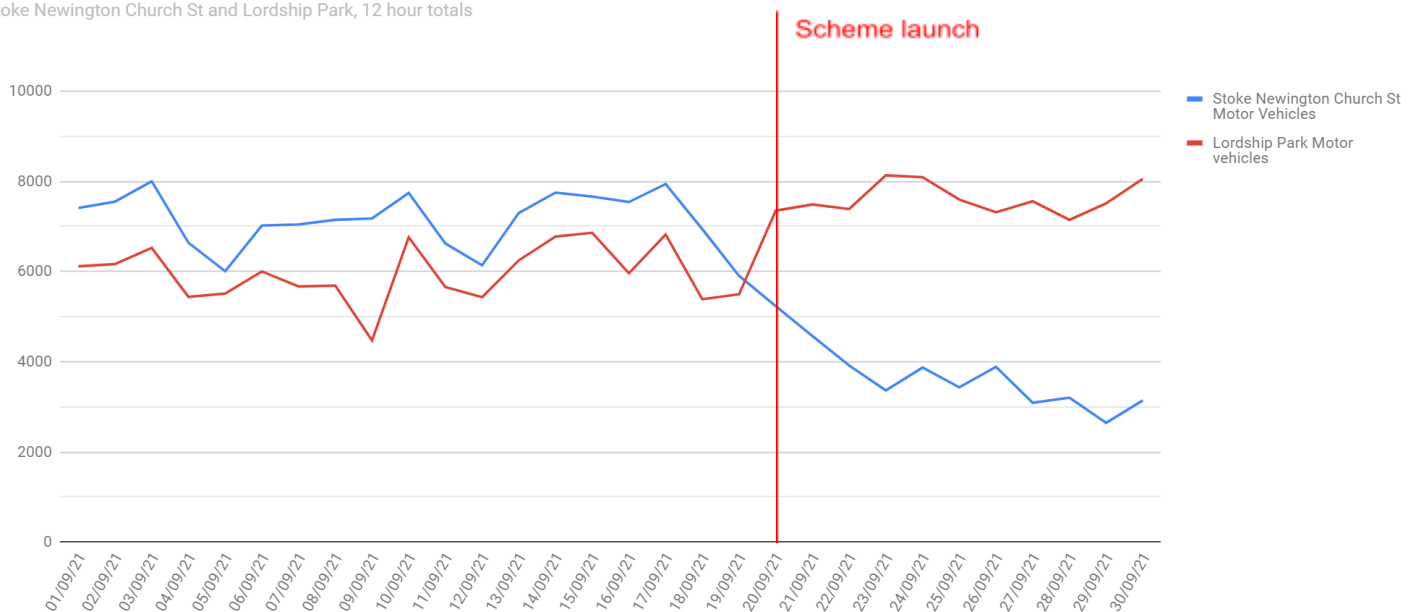
Traffic flows have also been monitored on Lordship Park to monitor traffic displacement effects. In the ten days before the road closure compared to ten days after, average daily 7-7 motor flow on Church declined by 3,765 while traffic on Lordship Park rose by 1,597 in the same period. Combined traffic on the two roads fell by 16.3%. These figures and the trend over the month of September are shown in [Table 3](#) and [Figure 4](#) below.

Table 3: Volumes of motor vehicle traffic on Stoke Newington Church Street before and after installation of bus gate compared to volumes on Lordship Park (7am-7pm)

| Motor Vehicle 7-7 Daily Average Flow includes buses | | | |
|---|-------------------------------|---------------|----------|
| | Stoke Newington Church Street | Lordship Park | Combined |
| Before (7-17 Sept) | 7279 | 6033 | 13312 |
| After (21-30 Sept) | 3514 | 7629 | 11143 |
| change | -3765 | 1597 | -2169 |
| % change | -51.7% | 26.5% | -16.3% |

Figure 4: Motor vehicle traffic trends on Stoke Newington Church Street and Lordship Park before and after installation of bus gate (7am-7pm)

Traffic Counts All Motor Vehicles - September 2021 - 7am to 7pm
Stoke Newington Church St and Lordship Park, 12 hour totals



North / South traffic on Lordship Road and Green Lanes

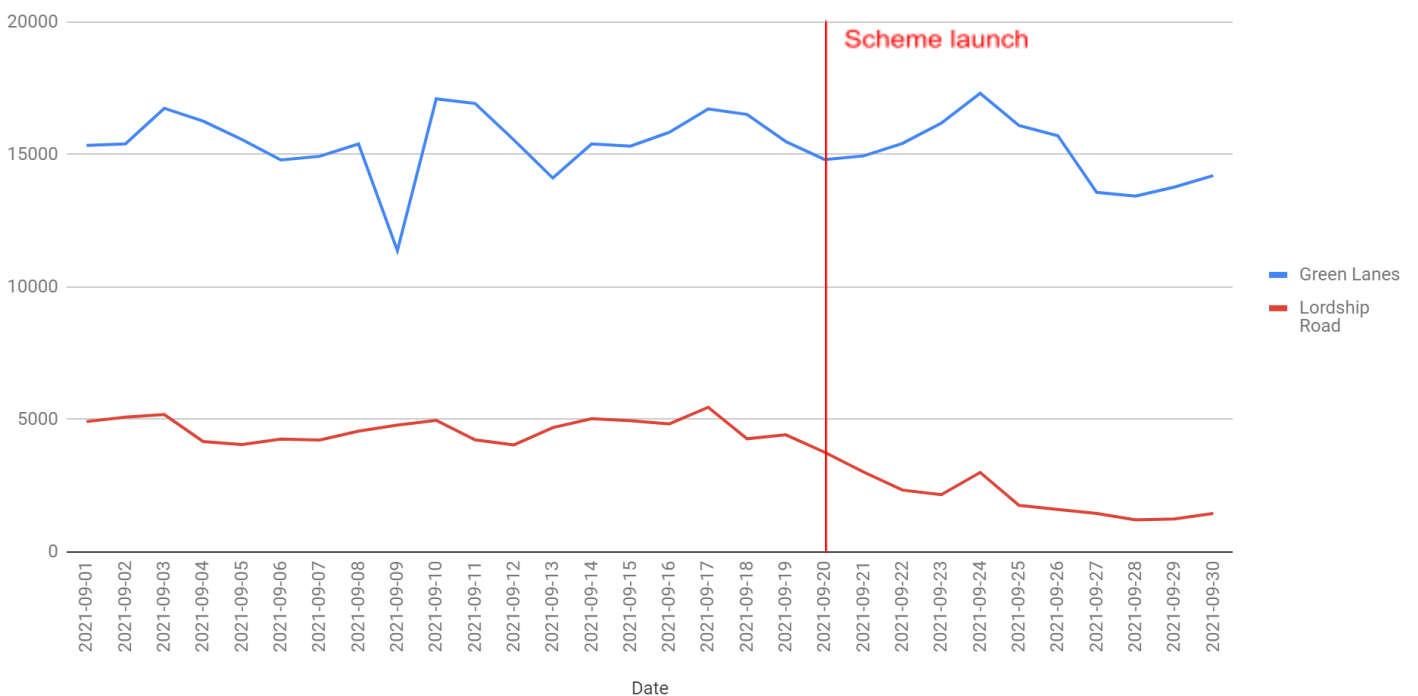
Traffic flows have also been monitored on Lordship Road and Green Lanes. In the period before the road closure compared to ten days after, the average daily 24 hour motor vehicle flow on Lordship Road declined by 2,787 while traffic on Green Lanes north of Lordship Park was almost the same, with a slight decline in the same period. Combined traffic on the two roads fell by 15.3%. These figures and the trend over the month of September are shown in [Table 4](#) and [Figure 5](#) below.

Table 4: Volumes of motor vehicle traffic on Lordship Road and Green Lanes before and after installation of the Stoke Newington Scheme

| All Motor Vehicle 24 hour Daily Average Flow includes buses | | | |
|---|---------------|-------------|----------|
| | Lordship Road | Green Lanes | Combined |
| Before (7-17 Sept) | 4699 | 15332 | 20032 |
| After (21-30 Sept) | 1912 | 15064 | 16976 |
| change | -2787 | -268 | -3055 |
| % change | -59.3% | -1.8% | -15.3% |

Figure 5: Motor vehicle traffic trends on Lordship Road and Green Lanes in September 2021

Traffic Counts All Motor Vehicles - September 2021 - 24 hour totals



7am to 7pm Traffic on Stoke Newington Church St, Lordship Park, Green Lanes and Lordship Road

Traffic flows for 7am to 7pm for four roads in the vicinity of the scheme are shown in table 5 and figure 6 below.

Table 5: Average volumes of motor vehicle traffic on Stoke Newington Church Street, Lordship Park, Green Lanes and Lordship Road before and after the scheme - 7am to 7pm

| Motor Vehicle 7-7 Daily Average Flow includes buses | | | | |
|---|-------------------------------|---------------|-------------|-------------|
| | Stoke Newington Church Street | Lordship Park | Green Lanes | Lordship Rd |
| Before (7-17 Sept) | 7279 | 6033 | 9885 | 3462 |
| After (21-30 Sept) | 3514 | 7629 | 9679 | 1342 |
| change | -3765 | 1597 | -206 | -2121 |
| % change | -51.7% | 26.5 | -2.1 | -61.2% |

Figure 6: Volumes of motor vehicle traffic on Stoke Newington Church Street, Lordship Park, Green Lanes and Lordship Road - 7am to 7pm

All motor vehicles 7am - 7pm - September 2021

Lordship Rd, Stoke Newington Church St, Green Lanes and Lordship Park

